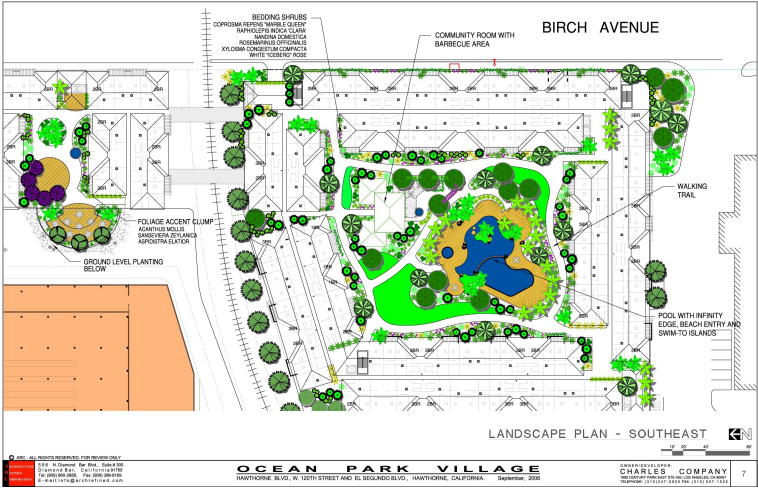


THE OCEAN PARK VILLAGE - West 120th Street to El Segundo Blvd., Hawthorne, California.



This is a major urban master plan project adjacent to LAX international airport. The project includes 590,000 S.F. of office spaces, 250,000 S.F. of retail and restaurant spaces and 645 units of residential apartments. The total building area is 1.6 million SF. The project embraces four standard city blocks.

